


Fuel Tanker Loading and Unloading

TTMA Flanged Sight Flow Indicators

Features & Benefits:

- Due to the proprietary blending of petroleum products, Dixon recommends that the thermoplastic tubing and the gaskets be immersion tested in the product to be handled to ensure compatibility (5200C models compatible with crude oil) 
- Durable cast aluminum housing replaces competitions all acrylic sight glass commonly found on tank trucks
- Allows for visual identification of the fuel grade prior to opening the valve
- Works with tank truck flanged butterfly valves found on gasoline trucks
- Low cost sight glass tube can be easily replaced



5200-SFI shown mounted on petroleum tank




5200-SFI

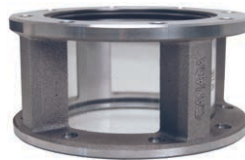
Part #	Description	Fuel Compatibility
5200-SFI-3	3" TTMA flange sight flow, 1¼" width, 3½" inside diameter	Gasoline and diesel, up to E100 and B100 biofuels
NEW 5200C-SFI-3¹	3" TTMA flange sight flow, 1¼" width, 3½" inside diameter, stainless retain ring	Gasoline and diesel, up to E100 and B100 biofuels, crude oil
5200-SFI	4" TTMA flange sight flow, 1¼" width, 4-3/8" inside diameter	Gasoline and diesel, up to E100 and B100 biofuels
NEW 5200C-SFI¹	4" TTMA flange sight flow, 1¼" width, 4-3/8" inside diameter, stainless retain ring	Gasoline and diesel, up to E100 and B100 biofuels, crude oil
5201-SFI	4" TTMA flange sight flow, 3¼" width, 4-3/8" inside diameter	Gasoline and diesel, up to E100 and B100 biofuels

¹ Are compatible with crude oil.

Note: Maximum flange bolt torque is 200 in-lb (inch pounds) 

Features & Benefits:

- Due to the proprietary blending of petroleum products, Dixon recommends that the thermoplastic tubing and the gaskets be immersion tested in the product to be handled to ensure compatibility (5200C models compatible with crude oil) 
- allows for visual identification of the fuel grade prior to opening the valve
- works with tank truck flanged butterfly valves found on gasoline trucks
- larger ID 4-3/8" flow indicator allows tank truck flanged butterfly valves to connect to either end of the indicator
- rated to **150 PSI**



5201-SFI

Part #	Description	Fuel Compatibility
5201-SFI	4" TTMA flange sight flow, 3¼" width, 4-3/8" inside diameter	Gasoline and diesel, up to E100 and B100 biofuels

Note: Maximum flange bolt torque is 200 in-lb (inch pounds) 